



RUDOLPH
THE
RED-NOSED REINDEER™
THE MUSICAL

The Original Television Classic Comes To Life!



Based on the animated television special "Rudolph the Red-Nosed Reindeer" and the stage production directed and conceived by Jeff Frank and First Stage

Executive Tour Producers

**S2BN ENTERTAINMENT & RIGHT ANGLE ENTERTAINMENT
PREMIERE PRODUCERS LLC**

Stage Adaptation by
ROBERT PENOLA

Arrangements by
TIMOTHY SPLAIN

Orchestrations by
WILLIAM C. WHITE

Music/Lyrics by
JOHNNY MARKS

"Rudolph the Red-Nosed Reindeer" animated television special adapted from a story by Robert L. May and the song by Johnny Marks.

with

**RYAN ADDISON JASON MICHAEL HAMMOND JENNY KAY HOFFMAN
KATIE LEE NATALIE HOLT MACDONALD JASON PALMER
KUMARI SMALL NAIVELL STEIB CHRISTOPHER JEWELL VALENTIN
RYAN WONG PAUL ZELHART**

and

**KOLT ANDREW ANDRE AULTMON MCKENNA BISAHA CLINT BLAKELY ELLIE COOK
DAYLE EMBLETON DREW FLICKINGER EMMA NOSSAL RICO VELAZQUEZ**

Scenic Design by
STEPHEN GIFFORD

Lighting Design by
JEAN-YVES TESSIER

Sound Design by
JULIE FERRIN

Production Stage Manager
MOLLY CASEY ATKINS

Flying Effects by
ZFX, INC.

Head Carpenter
JASON EVANS

Projection Design by
Z FRAME STUDIO

Tour Marketing and Press
**RIGHT ANGLE ENTERTAINMENT
YARNI POLAND
JOHN TELLEM/TGPR**

Exclusive Tour Direction
**BROADWAY AND
BEYOND THEATRICALS
TRACY McFARLAND**

Music Director
DAVID LAMOUREUX

Casting Director
LINDSAY BROOKS

General Manager
**RIGHT ANGLE ENTERTAINMENT
TYLER SOLTIS**

Assistant Director and Choreographer
**CEDRIC DODD
GRETCHEN DAWSON**

Company Manager
**RIGHT ANGLE ENTERTAINMENT
ABRAM BEST**

Directed and Choreographed by

DANA SOLIMANDO

rudolphthemusical.com

Rudolph the Red-Nosed Reindeer and related elements © and TM under license to Character Arts, LLC. All rights reserved.

CAST

(in order of appearance)

Sam the Snowman.....	RYAN ADDISON
Mrs. Claus	JENNY KAY HOFFMAN
Santa Claus.....	JASON MICHAEL HAMMOND
Donner/King Moonracer	PAUL ZELHART
Mrs. Donner/Dolly	KUMARI SMALL
Rudolph.....	NATALIE HOLT MACDONALD
Boss Elf.....	JASON PALMER
Hermy.....	CHRISTOPHER JEWELL VALENTIN
Elves.....	ANDRE AULTMON, McKENNA BISAHA, ELLIE COOK, DAYLE EMBLETON, DREW FLICKINGER, RICO VELAZQUEZ
Fireball	RYAN WONG
Yearlings	McKENNA BISAHA, ELLIE COOK, DREW FLICKINGER, RICO VELAZQUEZ
Clarice	KATIE LEE
Yukon Cornelius/Coach Comet	NAIVELL STEIB
Puppeteers	ANDRE AULTMON, McKENNA BISAHA, DAYLE EMBLETON, DREW FLICKINGER, RICO VELAZQUEZ
Bumble.....	KOLT ANDREW

SWINGS

EMMA NOSSAL, CLINT BLAKELY



The use of any recording device, either audio or video, and the taking of photographs, either with or without flash, is strictly prohibited. Please turn off all electronic devices such as cellular phones, pagers and watches.

CAST



RYAN
ADDISON



JASON MICHAEL
HAMMOND



JENNY KAY
HOFFMAN



KATIE
LEE



NATALIE HOLT
MACDONALD



JASON
PALMER



KUMARI
SMALL



NAIVELL
STEIB



CHRISTOPHER
JEWELL VALENTIN



RYAN
WONG



PAUL
ZELHART



KOLT
ANDREW



ANDRE
AULTMON



McKENNA
BISAHA



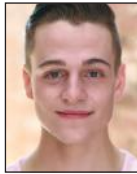
CLINT
BLAKELY



ELLIE
COOK



DAYLE
EMBLETON



DREW
FLICKINGER



EMMA
NOSSAL



RICO
VELAZQUEZ

MUSICAL NUMBERS

ACT I

Overture	Orchestra
“A Holly Jolly Christmas”	Sam, Chorus
“Jingle, Jingle, Jingle”	Santa Claus and Donner
“We Are Santa’s Elves” (Instrumental)/ “When Santa Claus Gets Your Letter”	Elves
“We’re a Couple of Misfits” (Intro)	Hermey
“Jingle, Jingle, Jingle” (Reprise)	Young Reindeer
“There’s Always Tomorrow”	Clarice, Chorus
“We’re a Couple of Misfits” (Continued)	Rudolph
“We Are Santa’s Elves”	Santa’s Elves
“We’re a Couple of Misfits”	Hermey and Rudolph
“Fame and Fortune”	Yukon Cornelius, Hermey and Rudolph

ACT II

Entr’acte	Orchestra
“Silver and Gold”	Sam
“The Most Wonderful Day of the Year (The Island of Misfit Toys)”	The Misfit Toys
“There’s Always Tomorrow” (Reprise)	Rudolph
“The Snowstorm”	Orchestra, Chorus
“Rockin’ Around the Christmas Tree”	Santa’s Elves
“We Are Santa’s Elves” (Reprise)	Santa’s Elves
“A Holly Jolly Christmas” (Audience Participation)	Sam
“A Merry, Merry Christmas”	Rudolph and Misfits
“Rudolph the Red-Nosed Reindeer”	All

*Orchestra tracks produced and recorded by
David Lamoureux and Los Angeles Musicians Collective*

WHO'S WHO in the CAST

RYAN ADDISON (*Sam The Snowman*). Credits: Judas Iscariot (*Jesus Christ Superstar*), Nicely Nicely Johnson (*Guys And Dolls*), Beadle Bamford (*Sweeney Todd*). Ryan would like to thank everyone who comes out to support live performances! "Love you Mom, Dad, Allie, Greg, Maverick and Twyla! Enjoy the show!!!"

JASON MICHAEL HAMMOND (*Santa Claus*). Jingle, jingle, jingle—you are here to see our show! Jingle, jingle, jingle—I play Santa Claus, you know! Happy holidays to all. Follow me on Instagram: @the.jason.hammond.show. James 1:17.

JENNY KAY HOFFMAN (*Mrs. Claus*) is delighted to be sharing this holiday classic and touring the country for the first time! She sends love to her family and Nicole at FireStarter Entertainment! Visit jennykayhoffman.com for more.

KATIE LEE (*Clarice*) is thrilled to be part of the *Rudolph* cast again! She would like to thank her family and friends for their unending love support. Enjoy the show! xx @katieleebythesea.

NATALIE HOLT MACDONALD (*Rudolph*) is happy to be back on the stage reprising the role of Rudolph. This is her fourth year in the national tour and she also played the role at the Grand Ole Opry in Nashville in 2019. "Thank you to Right Angle, Dana, my mom and dad, the cast and crew, and Jesus for this incredible opportunity."

JASON PALMER (*Boss Elf*) is a host, voice actor and theater veteran. He's hosted major global events, been a long-time performer at Disneyland, and voiced cartoons and some of the biggest video games to-date.

KUMARI SMALL (*Mrs. Donner/Dolly*) is thrilled to be making her national tour debut! Love to all of her family and friends. Happy Holidays! Follow her journey at kumarismall.com and @kumarismall.

NAIVELL STEIB (*Yukon Cornelius/Coach Comet*) is thrilled to make their first return to this magical show! They aspire to follow a path of continuous artistic growth, collaboration, activism and passion. NaivellSteib.com.

CHRISTOPHER JEWELL VALENTIN (*Hermey*). Christopher Jewell Valentin, originally from Greenville, S.C., is excited to go back to Christmastown! As a graduate of AMDA, he has performed in many theatrical productions. Follow him at @iamjewellvalentin.

RYAN WONG (*Fireball*). From Malaysia, Ryan looks to make his way into the entertainment industry. He has a passion for anything performing arts, whether it be dance, acting or singing.

PAUL ZELHART (*Donner/King Moonracer*). B.F.A. AMDA LA/NY. Previous credits include *King Kong* (Carl Denham), *All Shook Up* (Chad), *The Rocky Horror Show* (Brad Majors). Much love to my family for their support! @PaulNoises.

KOLT ANDREW (*Bumble*). *Rudolph* debut! Cirque du Soleil: *Dreambirds* (peg stilt walk while full body puppeteer). A multihyphenate performer, Kolt is featured on NBC, Disney, ABC, Apple+ and more soon. KoltAndrew.com.

ANDRE AULTMON (*Elf/Aviator/Snowken*). New Jersey native and recent AMDA graduate (B.F.A. musical theater). Andre is thrilled to begin his career as a part of this touring company. He thanks his family and mentors.

McKENNA BISAHA (*Elf/Airplane/Yearling/Snowken*) is a non-binary performer based in Long Beach, Cal. They were last seen performing in *Frozen Live!* at the Hyperion at Disney California Adventure. Enjoy the show and happy holidays!

CLINT BLAKELY (*Male Swing*) [he/they] is thrilled to be back onstage safely! This summer, they made their Off-Broadway debut in *The Importance of Being Earnest(ly) LGBTQ*. Keep up with Clint's acting, music and plant parenting online at clintblakely.com and @clintblakely. Thanks and happy holidays!

ELLIE COOK (*Elf/Flying Elf/Snowken/Yearling*) is a PNW native, and recent graduate from Central Washington University with her B.F.A. in musical theater. Many thanks to her friends and family for all of their love and support. @elliejeancook.

DAYLE EMBLETON (*Elf/Elephant/Snowken*). Rhode Island native, Dayle Embleton is an AMDA College and Conservatory alum. Dayle's credits include TV shows such as Nickelodeon's "The Thundermans," live stage performances such as New Kids on the Block Fenway Park concert and the 2019 Hermey tour of *Rudolph the Red-Noised Reindeer: The Musical*, as well as music videos for artists such as Ru Paul and Todrick Hall. Follow on instagram @dayleembleton!

DREW FLICKINGER (*Elf/Cowboy/Snowken/Yearling*) is thrilled to be in *Rudolph*, finishing his

WHO'S WHO in the CAST

B.F.A. in musical theater from Lipscomb University while on tour. Debut single, "September," available on all platforms. @drewflickinger.

EMMA NOSSAL (*Female Swing*). National tour debut! B.A. in theater arts from CSUF. Favorite SoCal regional credits: Maggie in *A Chorus Line* (Moonlight), Peggy Sawyer in *42nd Street* (Candlelight). Love to family and Drew.

RICO VELAZQUEZ (*Elf/Cowboy/Snowken/Yearling*). Southern Illinois University Edwardsville (B.S. theater and dance). Dance companies: Diavolo/Architecture in Motion. Nat'l tours: Broadway's *The Spongebob Musical* (first national). Television: top ten finalist on "America's Got Talent" (Diavolo).

DANA SOLIMANDO (*Director/Choreographer*) and her children enjoyed growing up with this iconic American classic. After launching 10 national tours, productions at NYC's Madison Square Garden and Nashville's The Grand Ole Opry, she is still passionate about bringing it on stage to audiences nationwide! Most recent credits: choreographer for the world premier of *Rebel Genius*, *Cabaret* (2019 Ovation and L.A. Drama Critics Circle nominations—Best Choreography), *American Idiot* (2016 Ovation Award nom.), Disney's *The Hunchback of Notre Dame* (5th Avenue Theatre), *Parade* (3-D Theatricals, 2013 Ovation Award nom.), *Mamma Mia!*, *Rent*, *The Addams Family* (with Rachael York and Bronson Pinchot), *Billy Elliot* (2015 L.A. Drama Critics Circle Award nom.), *Ragtime* (2015 Ovation Award nom.), *Damn Yankees* (2014 Ovation Award nom.), *Hairspray*, *All Shook Up*, *Swing!* (2004 and 2006 L.A. Stage Alliance Ovation Awards—Best Choreography). *Miss Saigon* at Macau International Arts Festival/McCoy Rigby Entertainment (2012 Ovation nom.—Best Choreography), *Jesus Christ Superstar* national tour (NAACP Theatre Award nomination). Other favorites: *La Cage aux Folles*, *Hair* and *The Wizard of Oz* (Sacramento Music Circus); *Little Miss Scrooge* (world premiere); *Spring Awakening* and *Little Shop of Horrors*. Dana is also the co-writer/director/choreographer for *Maestro* and *Route 66* on Crystal Cruise Lines. Broadway performance credits: *Peter Pan* (Tiger Lily—also filmed for A&E), *Cats* (Rumpleteazer), and *Swing!* (West Coast/Country Swing featured dancer). Many thanks to Character Arts, the folks at Right Angle, McCoy Rigby Entertainment and to the incredible creative team who has been with me since 2014! For Hailey and Jude Mason. danasolimando.com.

DAVID LAMOUREUX (*Music Director*). Theater: Musical Theatre West, 3-D Theatricals, Ogunquit Playhouse, Tuacahn Center. Tour/recording: Gwen Stefani, Augustana, Vanessa Carlton, Conrad Sewell, Rachel Bloom. For more information, visit davidlamoureuxcreative.com.

STEPHEN GIFFORD (*Scenic Designer*) has designed more than 200 productions nationally and internationally. He has garnered many awards and nominations for his scenic design work. stephengifforddesign.com. IG: @swgifford1.

JEAN-YVES TESSIER (*Lighting Designer*) is a primate with a single opposable thumb. He hails from the cold reaches of Canada and once had a sexy French accent. He has since lost it. If found please take good care of it. What a delight it is to participate in Rudolph's adventure!

JULIE FERRIN (*Sound Designer*) is proud and honored to be designing her seventh tour of *RRNR!* We have survived the unimaginable and the lights are bright on our stage! Come see us!

Z FRAME STUDIO (*Projection Design*) is the spirited collaboration of Art Lazaro, Sam Roseman, Mark Capella, Vaughn Hannon and Perry Freeze. *Rudolph The Red-Nosed Reindeer* (Grand Ole Opry), *The Simon & Garfunkel Story*, L.A. LGBT Center 50th, *Hair* at The Hollywood Bowl, *For The Record: Tarantino*, *The Brat Pack*, *FTR: Baz—Star Crossed Love*. Screen designs for film/TV: "Amend: The Fight for America," *Promising Young Woman*, *Mainstream*, *Am I OK?* and more!

MOLLY CASEY ATKINS (*Production Stage Manager*) has been involved in theater since birth, with a writer/director father and producer mother. She has stage managed for Nintendo and Disney Channel, Netflix, Amazon Studios, Sony Studio's Uprfront and multiple pre-Oscar events. She has also worked on projects and events featuring performers such as Lady Gaga, John Williams, Demi Lovato, Snoop Dogg, Imagine Dragons, Kristen Chenoweth and many more. In the past year, Molly has been managing the COVID-19 mass vaccination sites throughout all of Los Angeles County. She is honored to have been part of this huge and life changing project. Molly is thrilled to be back for the fourth year with the *Rudolph* family and would like to thank her family and friends for their continuous support.

JASON EVANS (*Technical Director/Head Carpenter*) is excited to be back on the road with *Rudolph!* National tour: *Rudolph* (Head Carpenter—

WHO'S WHO in the CAST

RAE). International: *Peter Pan* (Head Flyman—McCoy Rigby, Saudi Arabia). Regional: *Tenor by Night* (Production Manager—Cerritos PAC).

ANNA KLEVIT (*Assistant Stage Manager*) is thrilled to be touring and bringing much needed holiday cheer to all of you! Thanks to the incredible cast and crew. Much love to Mom and Dad.

JAKE SLOMINSKI (*Assistant Carpenter/Head Fly*) has been working backstage in theater, music and live events since 2010. He thanks his husband, Rico, for being on this journey with him through thick and thin.

SONNY BIANCHI I (*Assistant Props/Assistant Fly*) is making his first crew member appearance for Right Angle Entertainment. He is a California native and attends CSUF. He has nothing but love and support for his fellow crew and cast members.

EMILY COLLIER (*Head Props*). California bred, Chicago based, World bound.

TYLER TRAVERS (*Head Electrician*) is a touring stage electrician based out of Eugene, Ore. While at home, he is the house electrician for Oregon Contemporary Theatre and a member of IATSE Local 675.

JENNA HANLON (*Assistant Electrician*). A native of Rochester N.Y., Jenna Hanlon is a movement artist, theater technician and posture alignment therapist. She proudly works for Sasha Velour and The Joyce Theater in NYC.

VICTOR PRUDEAUX (*Head Audio*) has mixed countless musicals from *Man of La Mancha* and *Pirates of Penzance to Beauty and the Beast and Fame*. "I am excited to be joining the team on this tour, which will be a first for me. *Rudolph* was a tradition in my family and I'm proud that we have the opportunity to present it to others in this form."

SKYE EIMAN (*Assistant Audio*) is a NYC native excited to be on their first tour. Since graduating from Christopher Newport University with a B.M. in percussion performance, they have applied their classical musician training to their technical career and have worked at a variety of theme parks, event companies and off-Broadway theaters.

SIERRA BARRETT (*Wardrobe Supervisor*) has been costuming for over seven years and is excited to be working on this year's production of *Rudolph*. She would like to thank her friends and family who have supported her career.

ELIZABETH "EB" BOHKS [she/her] (*Head Wig/Makeup/Hair*) received her Cosmetology State Board License Summer of 2013. Thanks and love to the family and friends that love and support her. This and every show is dedicated in loving memory of her Grandmother, Lois Gentzler, I love you more! Follow her on Instagram @wigsbyeb.

TERRY HANRAHAN (*Props Coordinator*) has been with *Rudolph* since his 2014 flight and enjoyed every minute. Other fun projects have included *Peter Pan* with Cathy Rigby, and the interactive *Carrie* with McCoy Rigby, and 12 years with 3-D Theatricals.

CHRISTIAN ANDERSON (*Puppet Instructor*). Puppeteer, puppet builder, director of puppetry, a relatively nice guy...depending on who you ask. Notable credits: *Avenue Q* (Broadway), "Kidding" (Showtime), "Crank Yankers" (Comedy Central). Check out pandersonium.com... why not?

CEDRIC DODD (*Assistant Director and Choreographer*) attended AMDA, LA (B.F.A. dance theater). Credits include: Crocs, Apple, "American Horror Story" and "Brooklyn Nine-Nine." He teaches at Santa Clarita Ballet Academy, Steezy Studios and UCLA. Cedric performed in the 2017 national tour of *Rudolph* and was elevated to assistant choreographer at the Grand Ole Opry in 2019. He is represented by Go 2 Talent Agency and CESD.

ZFX, INC. (*Flying Effects*) is the complete service provider for flying effects. From high schools to Broadway, churches to special events, ZFX zealously pursues its goal of worldwide domination of the performer flying industry with unparalleled skill and enthusiasm.

S2BN ENTERTAINMENT (*Executive Tour Producer*) is a diversified live entertainment company that specializes in the production and promotion of live arena spectacles, global concert tours, theatrical performances and touring exhibitions. Created by legendary live events producer Michael Cohl, the company's recent productions include *Bat Out of Hell: The Musical*, *The Pink Floyd Exhibition: Their Mortal Remains*, *An Evening with Oprah*, Barbra Streisand, David Gilmour, Phil Collins, *Spider-Man: Turn Off the Dark*, *The Marvel Experience*, *Rock of Ages*, *An Evening with Al Pacino*, *A Night with Janis Joplin* and many more. Credited with developing the concept of package touring in 1989, Cohl has over 40 years of high-level expertise in the entertainment industry with clients such as The Rolling Stones, U2 and Pink Floyd. He was inducted into the Canadian Music Hall

WHO'S WHO in the CAST

of Fame when he received a Walt Grealis Special Achievement Award at the 2002 Juno Awards. Cohl is also a recipient of the 2004 Billboard Legend of Live Award, and was inducted in Canada's Walk of Fame in 2005. He and his shows have won over 35 entertainment industry awards, including a Tony, five Olivier Awards and multiple Emmys.

RIGHT ANGLE ENTERTAINMENT (*Executive Tour Producer*), led by founding partners Alison Spiriti and Justin Sudds, specializes in the production, marketing, management and distribution of live branded non-traditional entertainment from the digital, theatrical and concert worlds and beyond. RAE's proud roster includes *Disney Dance Upon a Dream*, *Heather McMahar: The Farewell Tour*, *The Price Is Right Live!*, *America's Got Talent Live!*, *The Simon & Garfunkel Story*, *Rudolph the Red-Nosed Reindeer: The Musical* (national tour and Grand Ole Opry), *Cat and Nat #MomTruths Live*, *Sasha Velour's Smoke & Mirrors*, *The Office: A Musical Parody* (Off-Broadway and national tour), *Grumpy Old Men: The Musical*, *Markiplier's You're Welcome Tour*, among many more. Visit them at RightAngleEntertainment.com.

TODD GERSHWIN (*Executive Tour Producer/Premiere Producers LLC*) specializes in producing live events and theatrical tours, with a specialty in family entertainment. Gershwin has produced successful theatrical productions, concerts and tours for numerous iconic brands. Current North American touring projects include *A Charlie Brown Christmas*, *PBS Kids Live*, *Rainbow Rangers*, the Tony Award-winning Broadway hit musical *Million Dollar Quartet* and *A Night with Janis Joplin*. Gershwin's projects have played at leading venues throughout North America, including Madison Square Garden, the Hollywood Bowl, Ravinia, Wolf Trap, Arena Stage, the Pasadena Playhouse and numerous Broadway theaters.

DANIEL CHILEWICH (*Executive Producer/Premiere Producers LLC*) is a music, theater and entertainment executive and attorney in New York and New Jersey. Daniel is a founder of Premiere Producers, a theatrical production company. His related production work includes the Broadway hit musical *A Night with Janis Joplin*; the upcoming Barry Manilow musical *Harmony*; the national tour of *'S Wonderful—The New Gershwin Musical*; *Over the Rainbow—The Music of Harold Arlen*, a multimedia concert celebration; the national tour of the critically acclaimed Gershwin multimedia symphonic concert, *Here to Stay—The Gershwin Experience*; and the national tour of the Tony

Award-winning show *Blast*.

TRACEY MCFARLAND/BROADWAY AND BEYOND THEATRICALS (*Exclusive Tour Direction*). Tracey is a seasoned theatrical executive with two successful decades of touring industry experience. As founder of InHouse Booking, she oversaw the inaugural tours of *Rudolph the Red-Nosed Reindeer: The Musical*, *The Hip Hop Nutcracker* with MC Kurtis Blow, *A Charlie Brown Christmas Live* and Dan and Phil's *The Amazing Tour Is Not on Fire*, as well as national tours of *Legally Blonde The Musical*, *An American in Paris* and Matthew Bourne's *Cinderella* and *Swan Lake*, to name a few. In 2019, InHouse Booking merged with Off-Broadway Touring to create Broadway and Beyond Theatricals, a full-service entertainment company dedicated to the distribution and creation of quality branded theatrical content for traditional and non-traditional venues throughout North America and beyond.

TYLER SOLTIS (*General Manager*) is a 20-year veteran of theatrical tour management who has led productions in all 50 states and over 30 countries. Right Angle productions include *Friends! The Musical Parody* and *Love Actually! The Musical Parody*.

ABRAM BEST (*Company Manager*). Grateful. 19 years in the industry. Miami City Ballet tours (U.S. and Paris). First national tours: *Sister Act* (U.S. and Tokyo), *Evita*, *Joseph...Dreamcoat*, Andrew Lloyd Webber's *Wizard of Oz* (Toronto and U.S.).

BOB PENOLA (*Script Adaptation*) is an award-winning playwright and creative writer/director based in NYC. Bob has created shows that can be seen around the world on luxury cruise ships, at theme parks and at corporate events. For him, it's a dream come true to be creatively involved in bringing this classic to life on stage.

JONATHAN FLOM (*Producing Partner*) has overseen the translation of the 1964 "Rudolph the Red-Nosed Reindeer" television special into the stage show *Rudolph the Red-Nosed Reindeer: The Musical*. He has worked directly with all of the theater companies and contributors who have brought their passions and great talents to the development of this touring production.

AARON BURAKOFF (*Associate Producing Partner*) oversees all of the location-based initiatives for Character Arts Creations, including stage shows, theme parks, public events and installations.

DANIELLE FLOM (*Associate Producing Partner*) has been responsible for ensuring that all of the visual elements in the production of *Rudolph the Red-Nosed Reindeer: The Musical* faithfully capture the unique charm and the overall look and feel of the iconic 1964 television special, “Rudolph the Red-Nosed Reindeer.”

STAFF FOR RUDOLPH THE RED-NOSED REINDEER: THE MUSICAL

General Manager Tyler Soltis
Associate General Manager Lara Snow
Production Manager Matthew Fischer
Director/Choreographer Dana Solimando
Assistant Director & Choreographer ... Cedric Dodd
Assistant Director
& Choreographer Gretchen Dawson
Music Director David Lamoureux
Vocal Coach Will Vought
Puppet Instructor Christian Anderson
Lighting Designer Jean-Yves Tessier
Sound Designer Julie Ferrin
Costume Coordinator Donna MacNaughton
Scenic Designer Stephen Gifford
Props Coordinator Terry Hanrahan
Video Supervisor Perry Freeze
Flying Director Wesley Miller
Director of Merchandise and VIP Joey Boyle
Marketing Coordinator Sarah Guilford

TOURING COMPANY

Company Manager Abram Best
Production Stage Manager Molly Casey Atkins
Technical Director/Head Carpenter Jason Evans
Assistant Stage Manager Anna Klevit
Assistant Carpenter/Head Fly Jake Slominski
Head Audio Victor Prudeaux
Assistant Audio Skye Eiman
Head Electrician Tyler Travers
Assistant Electrician Jenna Hanlon
Head Props Emily Collier
Assistant Props/Assistant Fly Sonny Bianchi I
Head Wig/Makeup/Hair Elizabeth “EB” Bohks
Wardrobe Supervisor Sierra Barrett

Special Thanks to Esteban Valdez

“Rudolph the Red-Nosed Reindeer” animated television special adapted from a story by Robert L. May and the song by Johnny Marks, music and lyrics by Johnny Marks. All elements © and TM under license to Character Arts, LLC.



The Director/Choreographer is a member of the Society of Stage Directors and Choreographers, Inc., an independent national labor union.
